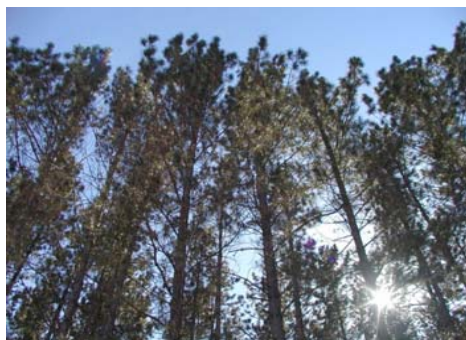


# FOREST STEWARDSHIP

Multiple use forest management on private forest land improves timber production, wildlife habitat, and aesthetic value while maintaining water quality and providing economic sustainability.

The Koochiching SWCD offers assistance to private landowners on the following forestry related programs:

- **Minnesota Forest Resource Council**
- **Forest Stewardship Plans**
  - Description of forest stands
  - Identification of resource concerns (erosion, water quality, insects, etc.)
  - Recommendations to properly manage private forest resources
  - Sustainable Forest Incentive Act (SFIA)
- **Cost Share**
  - Financial assistance for the implementation of various forestry and wildlife recommendations
- **Voluntary Site Level Forest Management Guidelines Program**
  - Support, education, and information
- **Tree Sales Program**
  - Annual sale of conservation trees (sold in bundles of 25 trees)



The Koochiching SWCD consists of five locally elected supervisors and two full-time staff members.

Our main focus is to educate and assist local landowners in becoming better stewards of their land and its natural resources.

## SUPERVISORS

Ralph Lewis	District I
Wayne Meyers	District II
Eldon Voigt	District III
Bernie Uran	District IV
Al Linder	District V

## STAFF

Pam Tomevi	District Coordinator
Justin Berg	District Technician
Krystina Meyers	Program Assistant

If you would like more information on the programs and services we provide, contact:  
the Koochiching SWCD office at  
218-283-1174

## Koochiching County SWCD

Courthouse  
715 4th Street  
International Falls MN 56649

Phone: 218-283-1174  
Fax: 218-283-1176  
Email: [pam.tomevi@mn.nacdnet.net](mailto:pam.tomevi@mn.nacdnet.net)

## *Koochiching County*



## *Soil & Water Conservation District*

*Established 1954*

---

### *Who Are We?*

---

### *What Do We Do?*

The Koochiching Soil & Water Conservation District (SWCD) is a local agency that provides access to natural resource management and conservation services. In cooperation with local, state, and federal agencies, the SWCD provides technical financial, and educational assistance to address natural resource concerns. Assistance is available to all taxpayers and land users within the borders of Koochiching County.

## EROSION CONTROL



Before

After

Protecting surface and ground water quality is one of several high priorities identified by the Koochiching Soil & Water Conservation District as well as the Koochiching County Comprehensive Local Water Management Plan.

Controlling soil erosion significantly reduces the amount of sedimentation, nutrients, and pesticides entering our surface waters.

Erosion control assistance is available for:

- Information & Education
- Project Planning & Design
- Rock Rip Rap
- Bioengineering
- Critical Area Seeding
- Permitting Assistance
- Tree & Shrub Planting

Check with the Koochiching SWCD to see if cost-sharing assistance may be available for your project.

## ENVIRONMENTAL EDUCATION

The Koochiching SWCD operates under the concept of combining natural resource utilization with conservation.

As our reliance on natural resources continues to increase, so must our efforts to ensure their sustainability for future generations.

***It is our task in our time and in our generation to hand down undiminished to those who come after us, as was handed down to us by those who went before, the natural wealth and beauty which is ours.***

**-President John F. Kennedy (1917—1963)**

The Koochiching SWCD is currently involved with the following:

- County Land Use Plan
- County Water Plan
- Rain Gauge Monitoring
- Poster, Essay, & Video Contest
- EnviroScape Model Presentation
- MN Logger Education Program
- Local / County Fairs
- Outdoor Education Days Program
- River Boards
- Quarterly Newsletters
- Multi-Media Presentations
- North Central MN Joint Powers Board
- Beneficial Re-Use of Wood Ash
- Woodland Advisor Program
- Laurentian Resource Conservation & Development (RC&D) Program

## WETLAND CONSERVATION

Best known for wildlife habitat, wild rice, cranberries, or a place to hunt and fish, wetlands offer numerous environmental benefits as well:

- Wetlands reduce flooding by slowing excess runoff during heavy rain falls.
- Wetlands improve surface and ground water quality by filtering out sediments and nutrients that can pollute water resources.

As a member of the Koochiching County Wetland Committee, the SWCD can assist landowners and Local Governmental Units (LGUs) with the following:

- Information & Education
- Wetland Determinations
- Wetland Credit Banking
- Replacement & Restoration Orders
- Technical Evaluation Panel
- Technical Advisory Committee
- Minnesota Wetland Conservation Act of 1991
- Koochiching County Wetland Flexibility Plan & Ordinance

